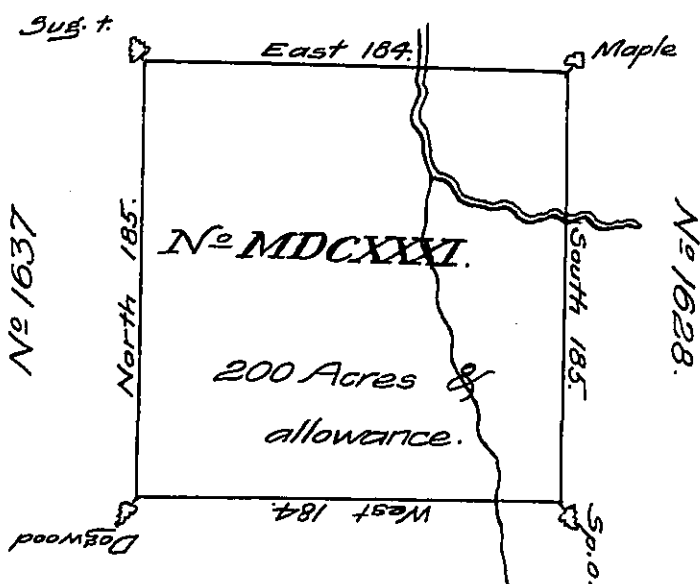


N^o 1632.

Jn^o Rybecker
 drawn May 4th 1807
 by Act of 4th April
 1807.
 N^o 1631.
 Dist^t 8.



In pursuance of an Act of General Assembly of the state of Pennsylvania, passed the 24th day of February, 1785, entitled "An Act for directing the mode of distributing the Donation Lands promised the Troops of this Commonwealth"; and by order of the Surveyor General with the approbation of the Honourable the Supreme Executive Council, I have surveyed on the 13th day of November 1785, the above described Tract of two hundred acres of land, and allowance of six per cent. for roads, &c. No. 1631. situate in District No. 8. on the west side of the Alleghany river, in the county of Westmoreland.

To John Lukens, Esq. }
 Surveyor General. }

Alexander M-Dowell D.S.

now Crawford County.

IN TESTIMONY that the above is a copy of the original remaining on file in the Department of Internal Affairs of Pennsylvania, made conformably to an Act of Assembly approved the 16th day of February, 1833, I have hereunto set my Hand and caused the Seal of said Department to be affixed at Harrisburg, this ninth day of June 1908.

Henry Howell
 Secretary of Internal Affairs.